



ALAMEDA COUNTY FIRE DEPARTMENT

SERVING:

City of Dublin

City of Emeryville

City of Newark

City of San Leandro

City of Union City

Lawrence Berkeley
National Laboratory

Lawrence Livermore
National Laboratory

Unincorporated Areas
of Alameda County

Alameda County
Regional Emergency
Communications Center

Personal Emergency Preparedness

Dedicated to Superior Service



HOUSEKEEPING

SmartSign.com • 800-952-1457 • S2-0962

Dedicated to Superior Service



About the Program

Project Objective:

- To provide community members with the tools and resources they need to be better equipped to deal with minor emergencies and large scale events.

Project Goal:

- To increase community capacity and self sufficiency during a disaster.



Alameda County Fire Department

- Service area of 508 square miles
 - Unincorporated County (exclusive of the Fairview area)
 - City of Dublin
 - City of Emeryville
 - City of Newark
 - City of San Leandro
 - City of Union City
 - Lawrence Berkeley National Laboratory
 - Lawrence Livermore National Laboratory
 - Alameda County Regional Emergency Communications Center
- Approximately 394,000 citizens





Alameda County Fire Department

Emergency Operations

- 30 Fire Stations
- 26 Engines, 7 Trucks, 1 Heavy Rescue & 4 Battalion Chiefs (24 / 7)
- 442 Full Time Employees (Fire – 403, ACRECC – 39)
- 100 Reserves

Specialized Equipment

- 1 Bull Dozer
- 3 Zodiac Rescue Boats & 1 Protector Boat
- 2500 Gallon Water Tender
- State Certified Type I Heavy Rescue
- State Certified Type I Hazardous Materials Response Team



Are you ready?

Emergency
and Disasters
Situations can occur
at
any time...





Benefits of Being Prepared

Reduces fear and anxiety

Reduces the impact of disasters





Be Prepared - Not to be Scared

A person who is prepared can possibly save his or her own life, the lives of friends, family and neighbors





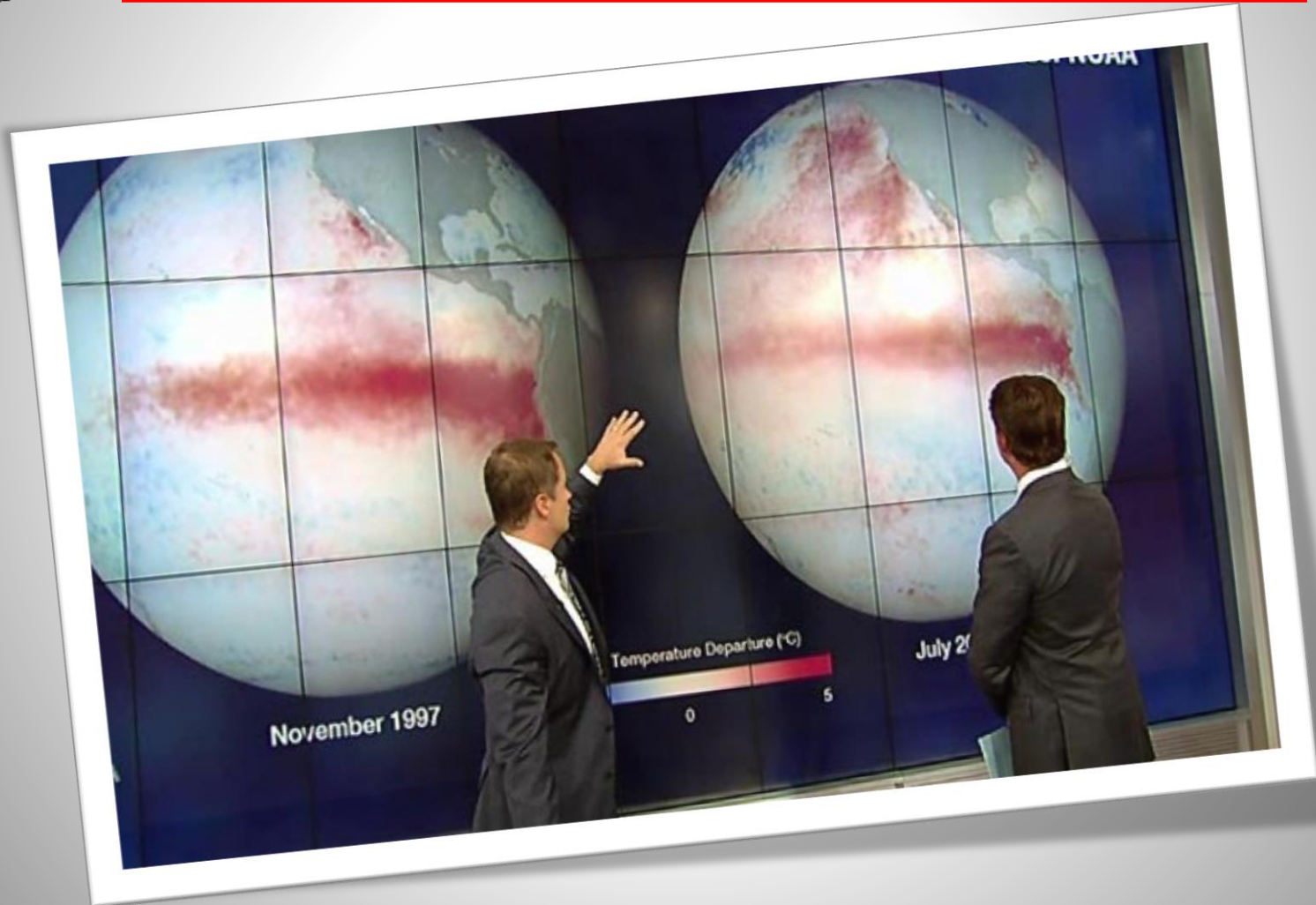
Let's Talk

What kind of emergencies or disasters might you experience?





WEATHER



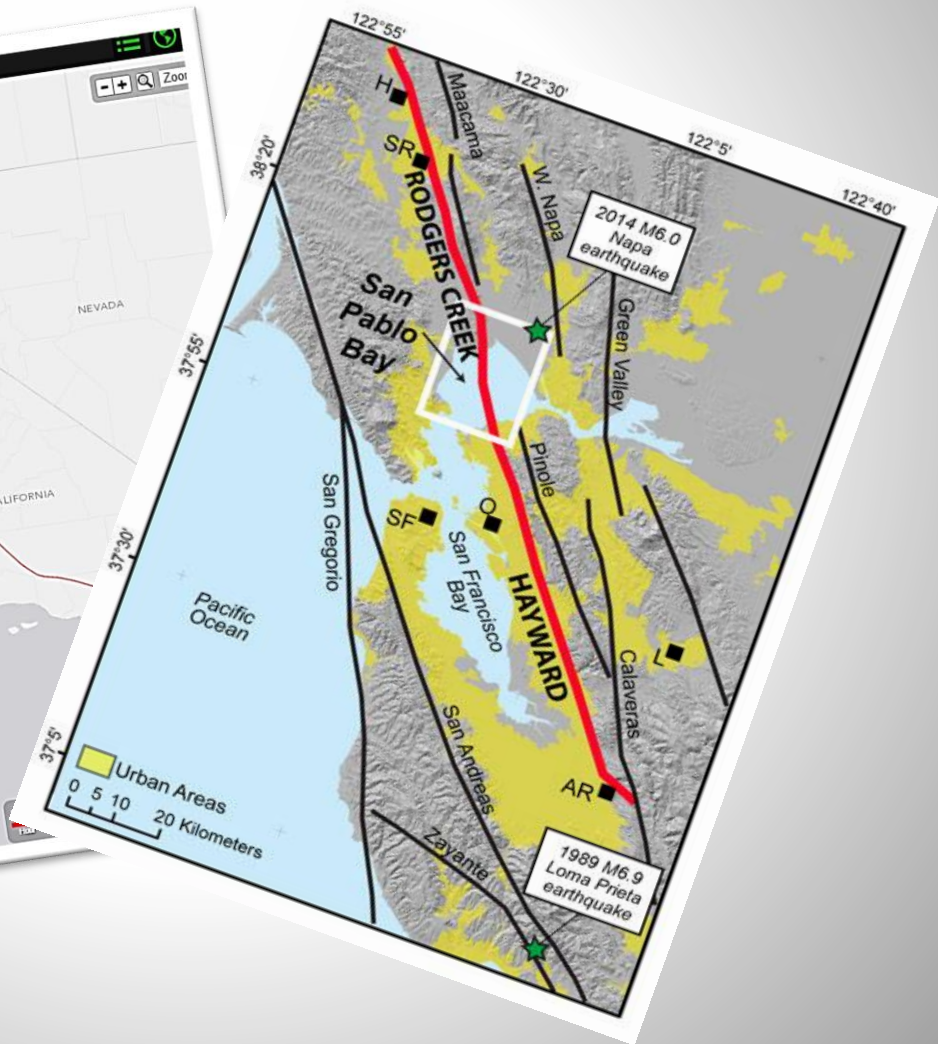
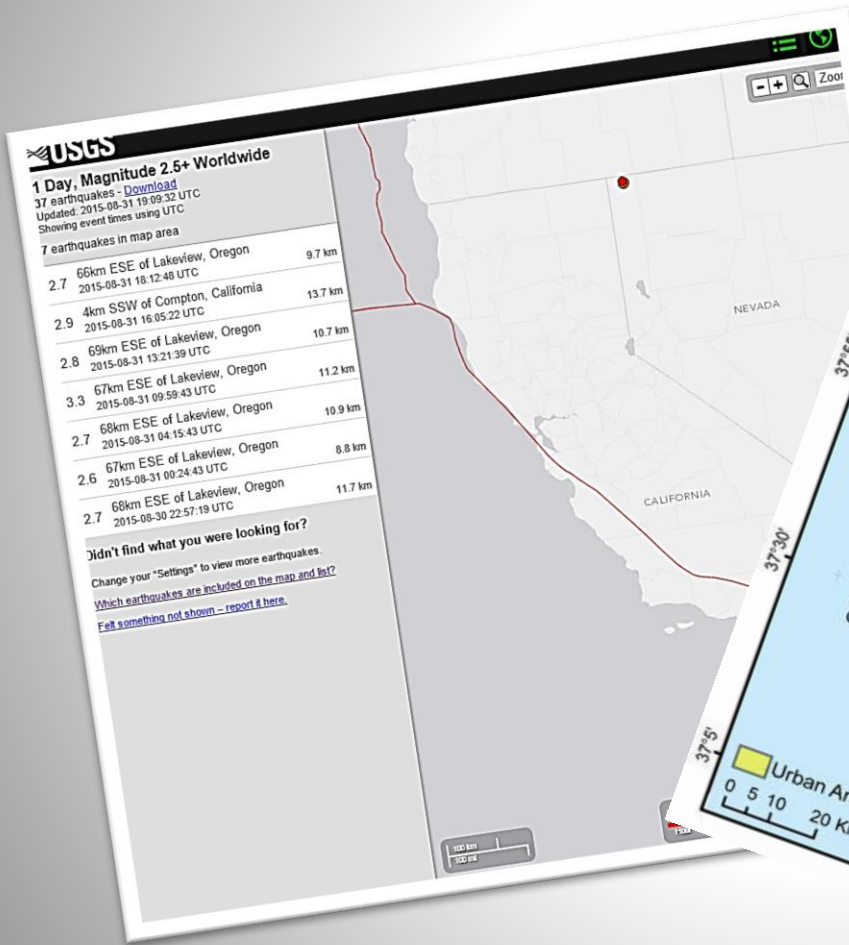


FIRE





EARTHQUAKE





Before it happens





Assessment & Mitigation

Where is the most damage likely to occur in your home or business?





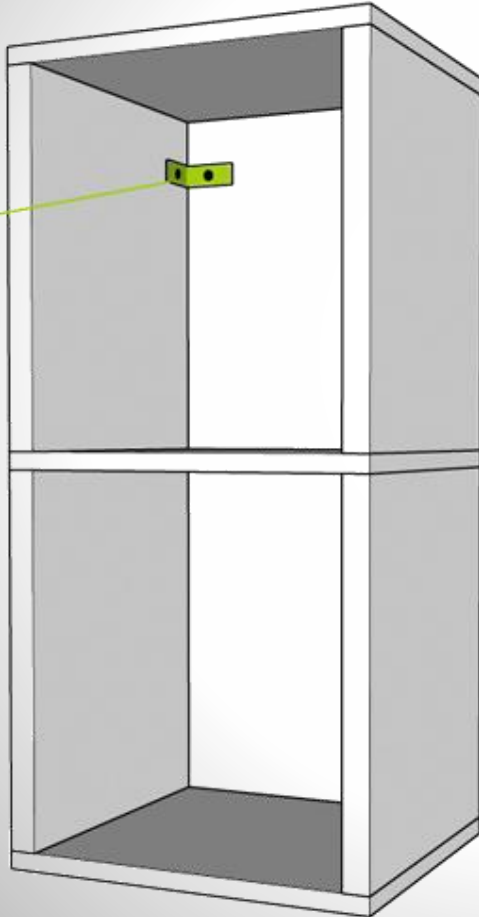
The Kitchen





Secure and Move

L-Brackets & Screws



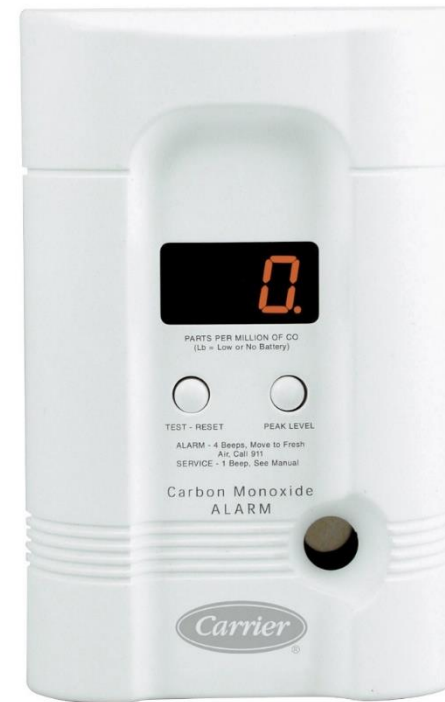


Alarms

Smoke Alarms



CO Alarms





Documentation





Family Planning



PLANS

- ✓ **Communication**
- ✓ **Shelter in Place**
- ✓ **Evacuation Procedures**
- ✓ **Meeting Places**



Communications

Out of town contact
(Out of State better)

After event, call your contact

Give vital information about
each family member - *Text
messaging*

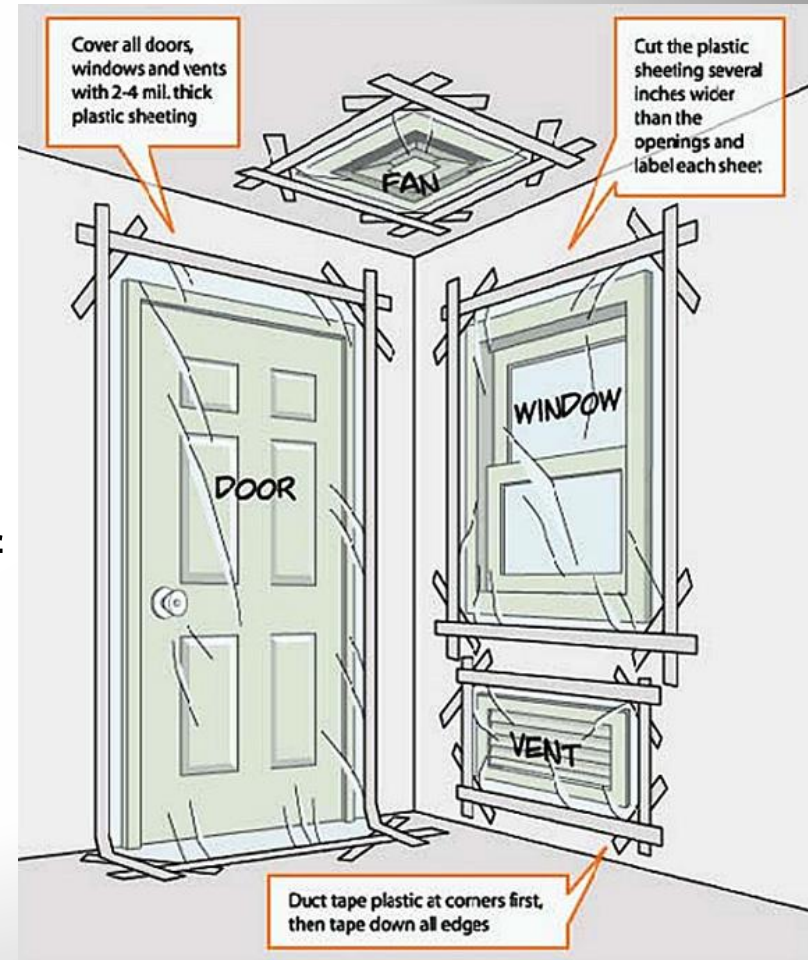
Everyone in your immediate
family needs a copy





Plan to Shelter in Place

- Close and lock all windows and doors
- Turn off all fans and air conditioning systems
- Cover doors, windows and vents with sheeting material
- Get your emergency supply kits
- Move to the most interior part of the building
- Tune into local emergency broadcasts on battery operated radio

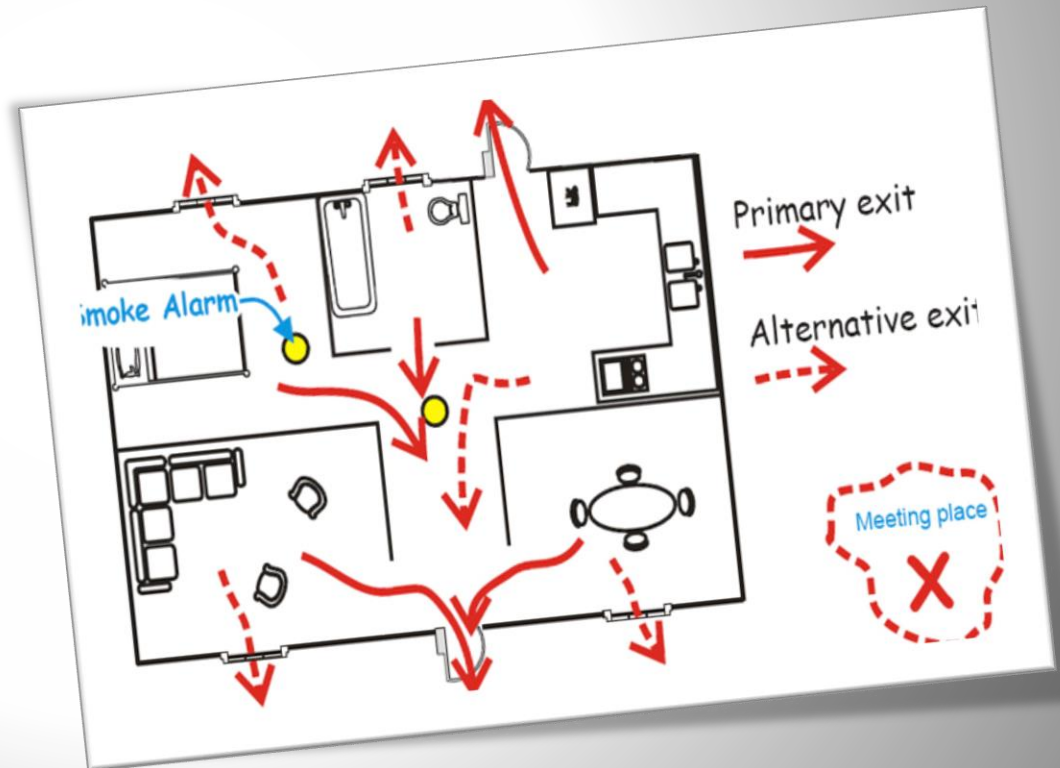




Evacuation Plans

Know 2 escape routes from every room

Plan and Practice what to do in a fire, earthquake, or storm





Reunification Plans

3 Meeting Places

- Outside the home
- Outside the neighborhood
- Outside the affected area

*Keep with you Evacuation plan
& map of area





Access and functional needs Individuals

- ✓ Take responsibility for yourself
- ✓ Arrange for someone to check on you
- ✓ Keep emergency phone numbers near the phone
- ✓ Prepare a 'Go' bag
- ✓ Register with the police and PG&E





Pets

Other than service animals, pets are not allowed in shelters!

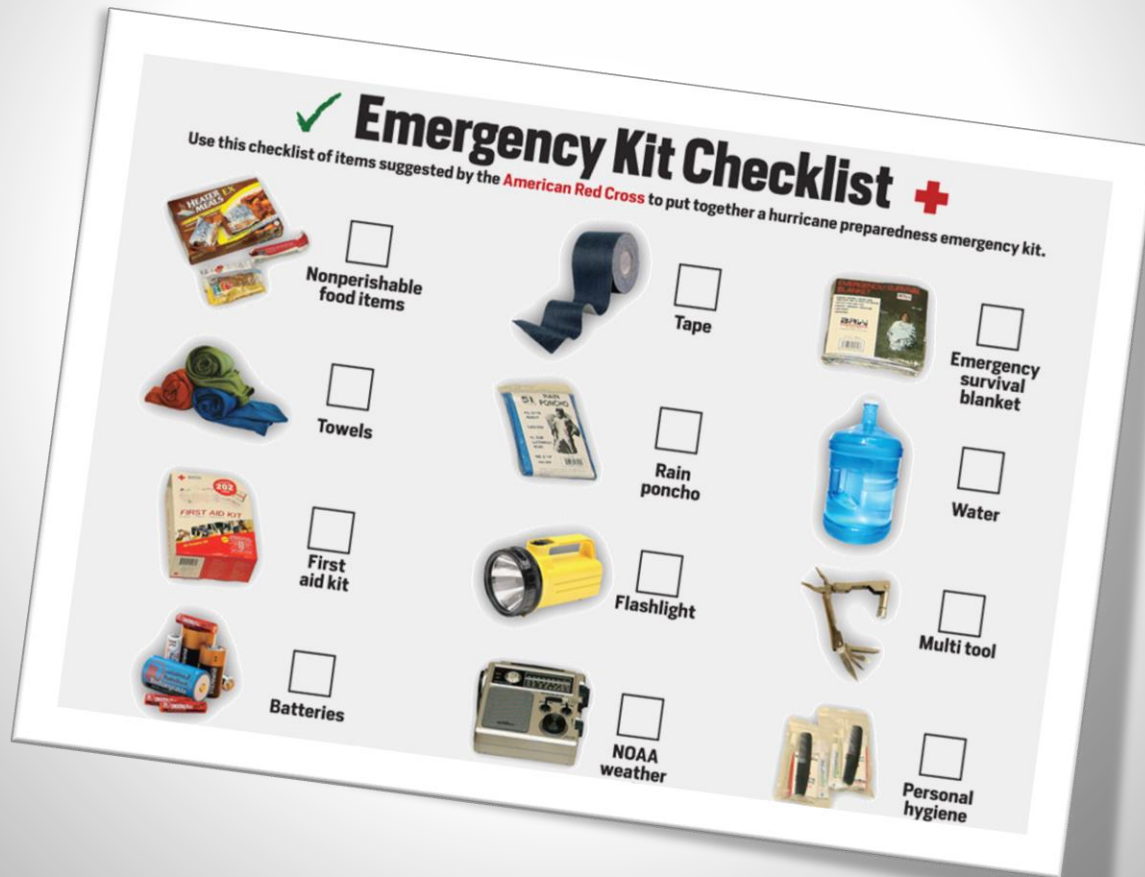
Make arrangements on where you will put your pets

Prepare a Pet Survival Kit





SUPPLIES





Food

Choose food that...

You will enjoy

Requires little cooking/water to prep

Require no refrigeration

Does not increase thirst (i.e. low salt)

Meet the needs of infants, diabetics or others with special needs



Remember
utensils and a
manual can
opener!



Water

Drinking

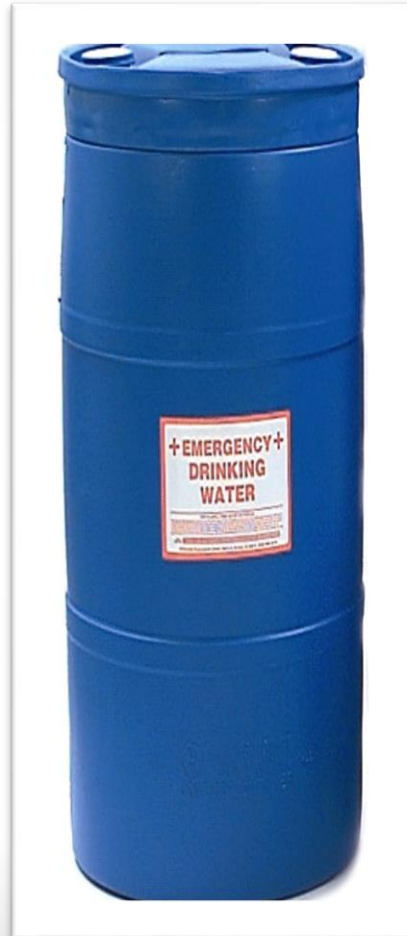
1 Gallon

Per Person

Per Day (min. 3-10 days)

Sanitation

Requires additional water





Supply Locations

1/3 of time at work / school

Food & Water for 3 days, personal protection equipment

1/2 of time at home

at home – Food & Water for 14 days a full supply kit

4 hours traveling/elsewhere.

Food and Water for 3 days, small supply kit with PPE





RESPONSE

During an emergency



During a Fire

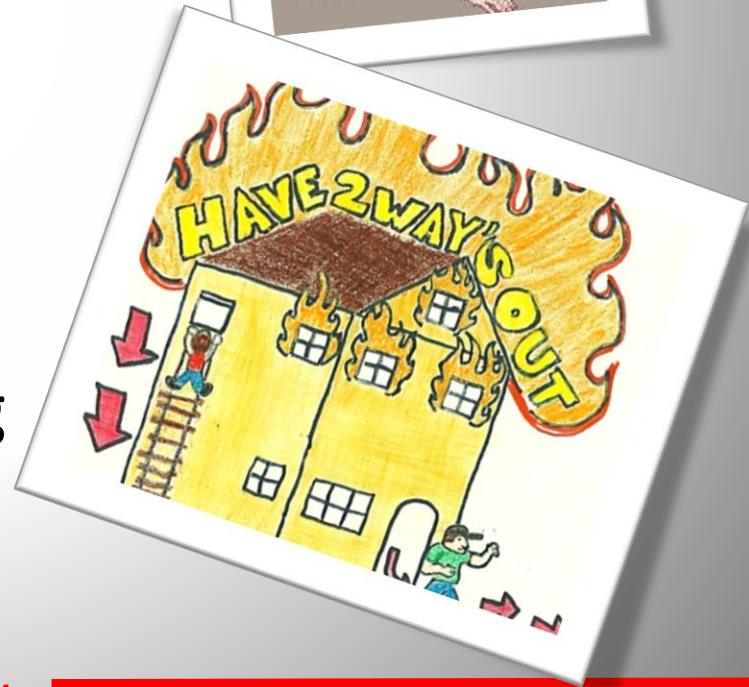
Know where your exits are

Stay low

Test the doors with the back of your hand

Exit the building and stay out!

Call 911 from outside the building





During a Fire

If you are trapped, signal to emergency personnel



If your clothes catch on fire
Stop, Drop, Cover, & Roll





Learn how to use a Fire Extinguisher





Extinguish Small Fires





During an Earthquake

Drop, cover, and hold on.

If indoors, stay there!

If outdoors, find a spot away from buildings, trees, streetlights and power lines, and overpasses.

If in a vehicle, drive to a clear spot and stop.







RECOVERY

After the Emergency



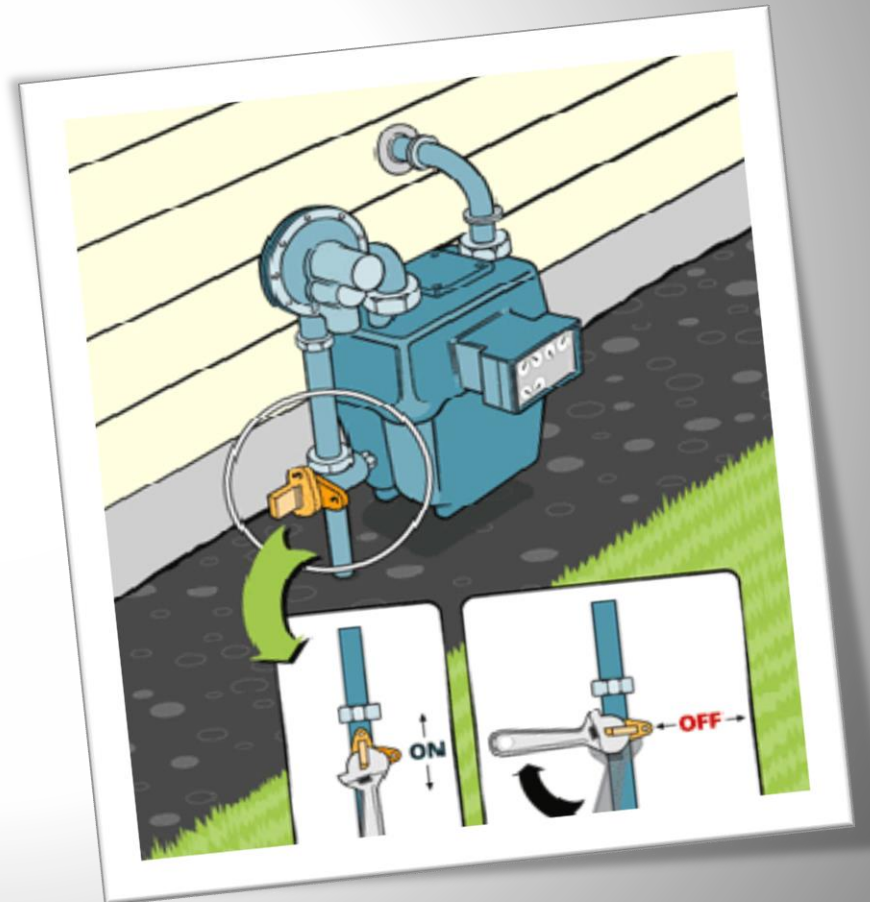
Utility Control - Shut Off

Natural Gas

Smell gas

See the dials spinning much faster than normal

Hear leaking gas





Gas shut off

Once the gas is turned off, **do not** turn it back on until a PG&E or other qualified professional does a safety inspection.





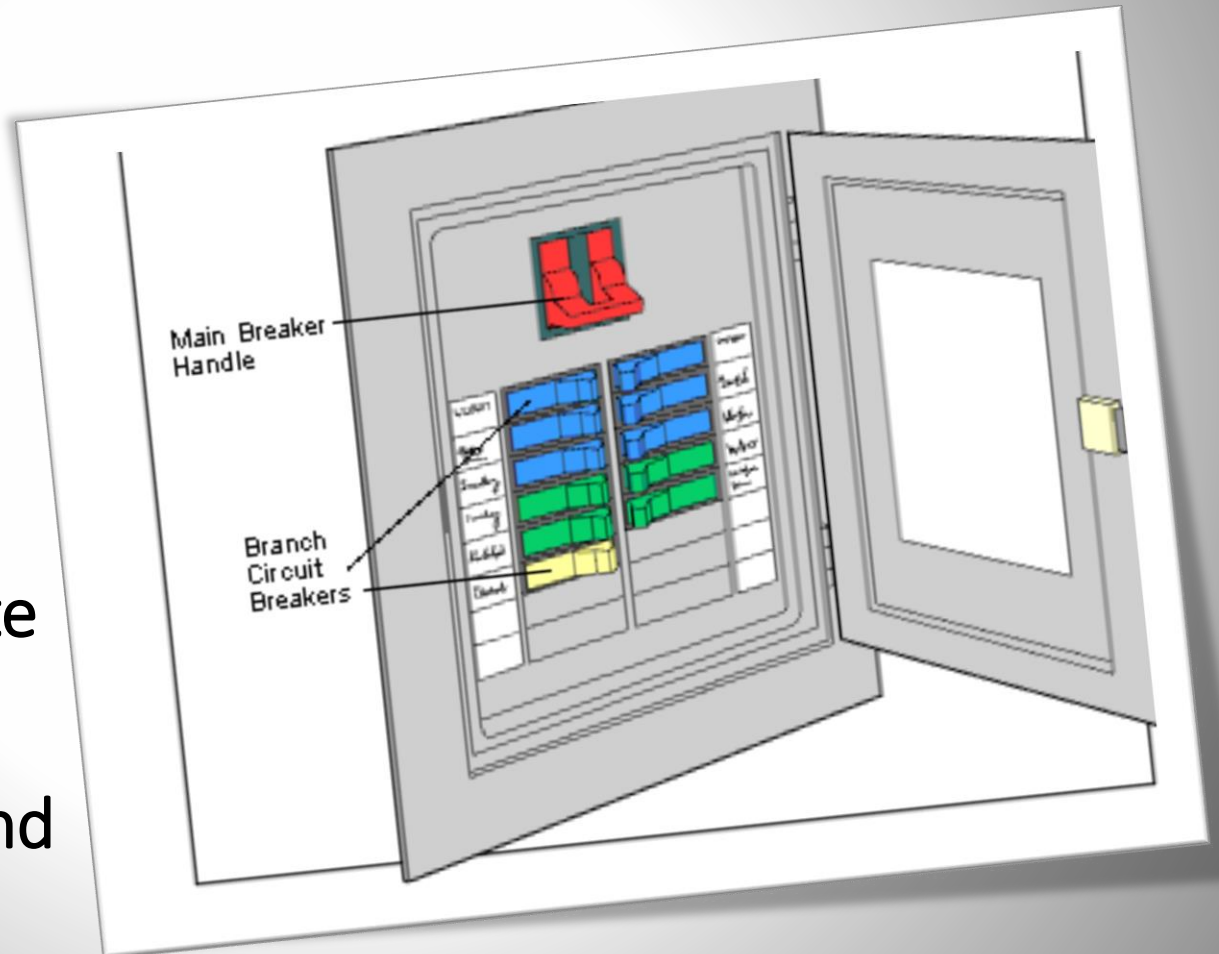
Utility Control – Shut Off

Electricity

Smell burning

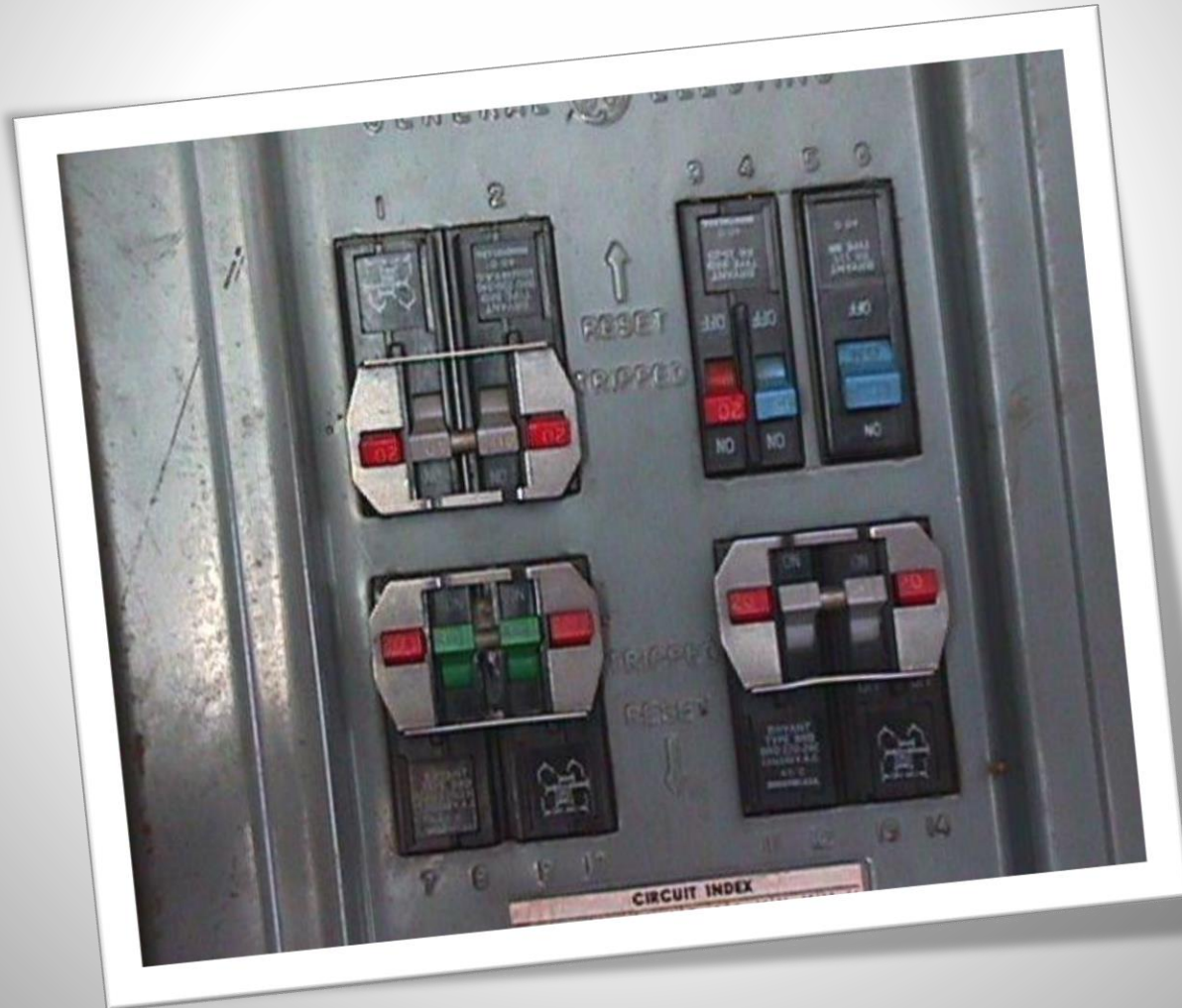
See arching,
blackened area
around switch plate
or outlet

Hear popping sound
at the outlet





Turn Off Breakers First





...Or Unscrew Fuses





Turn Off Main Breaker Last

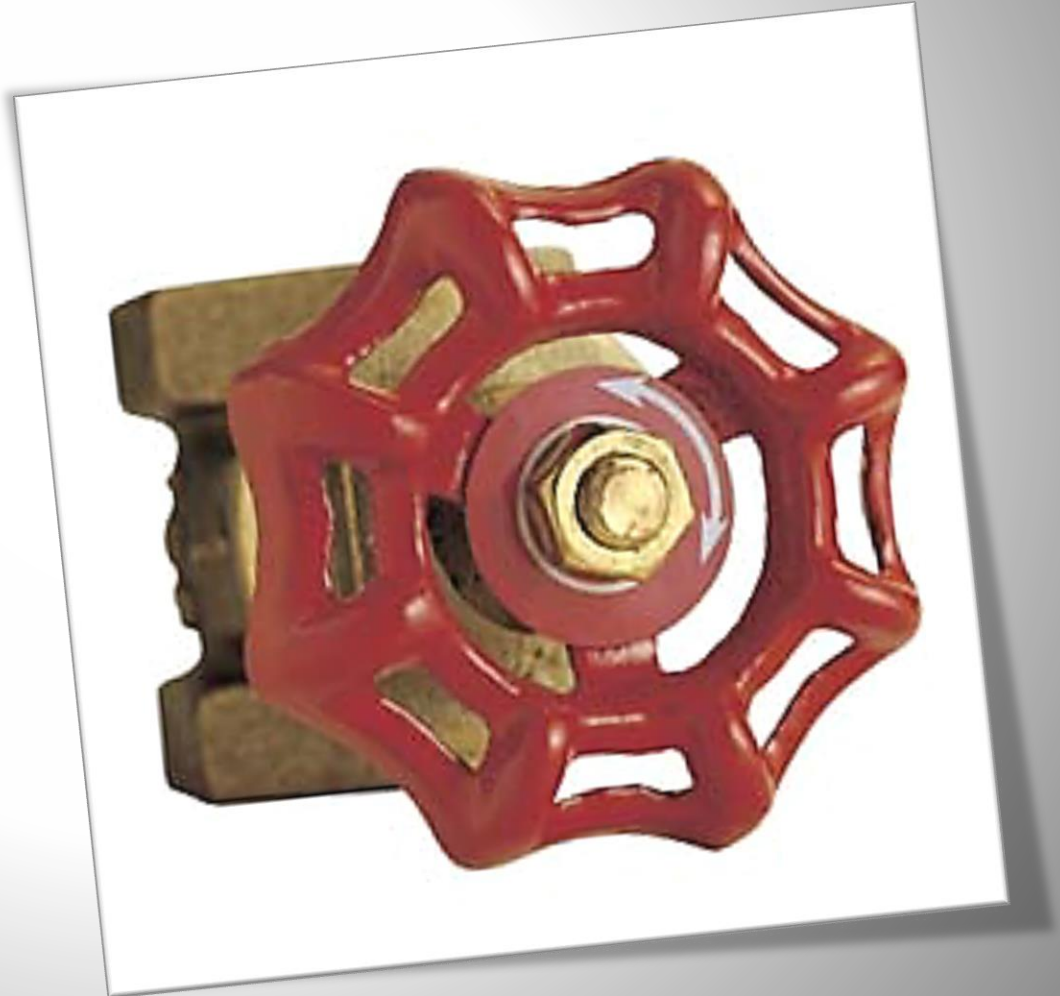




Turn Off Water

Water

- Hear rushing water
- See excessive amounts of water running or damaged pipes



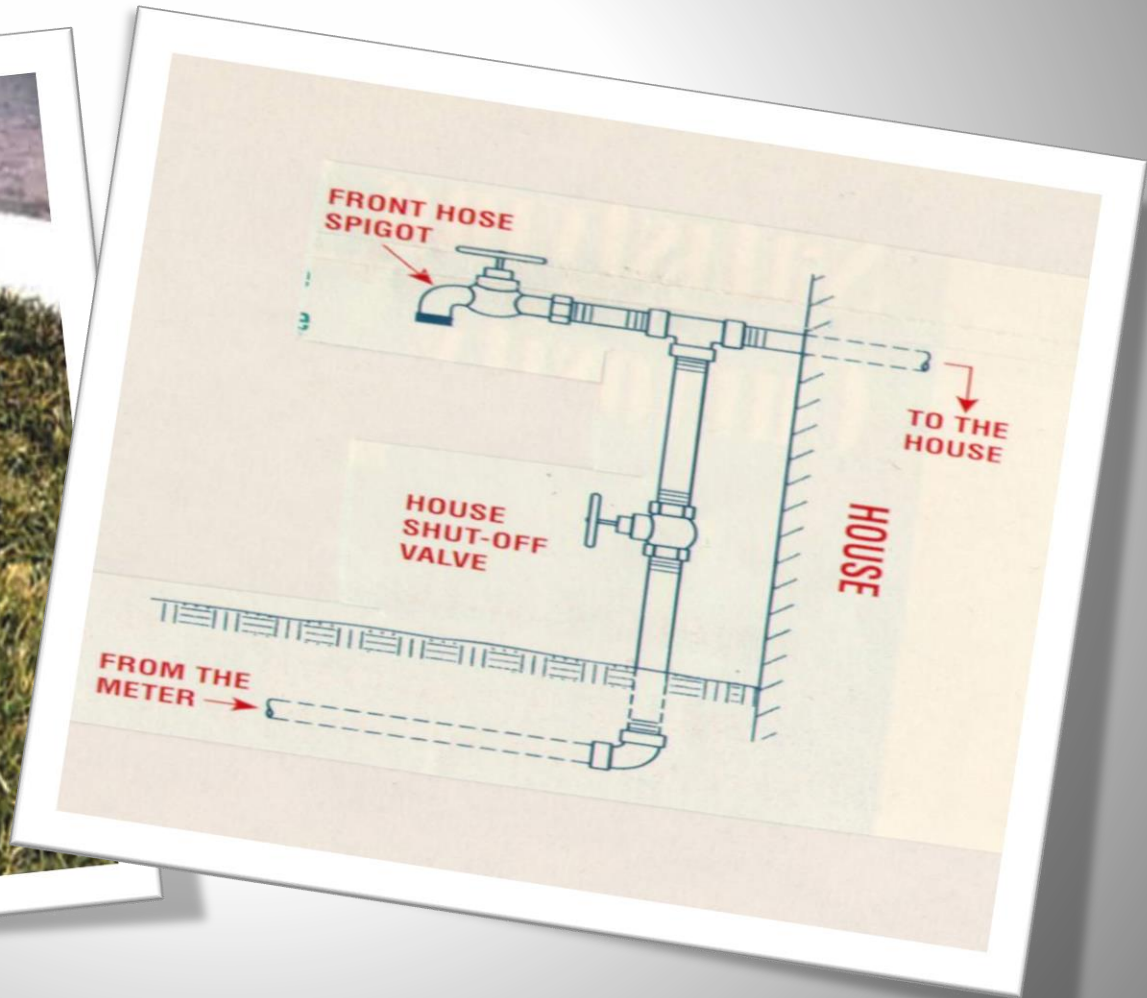


Turning off the Water





Turn Off the Water





Any Questions?



Dedicated to Superior Service



FREE CLASSES!

Check our websites:

www.co.alameda.ca.us/fire/emergency

www.acfdcert.eventbrite.com



Thank You!



Alameda County Fire Department
Emergency Preparedness Unit
6363 Clark Avenue, Dublin, CA 94568

Phone: (925) 833-3473 ext. 1721 or
(510) 632-3473 ext.1721
Email: CERT@acgov.org

Contact Us!